

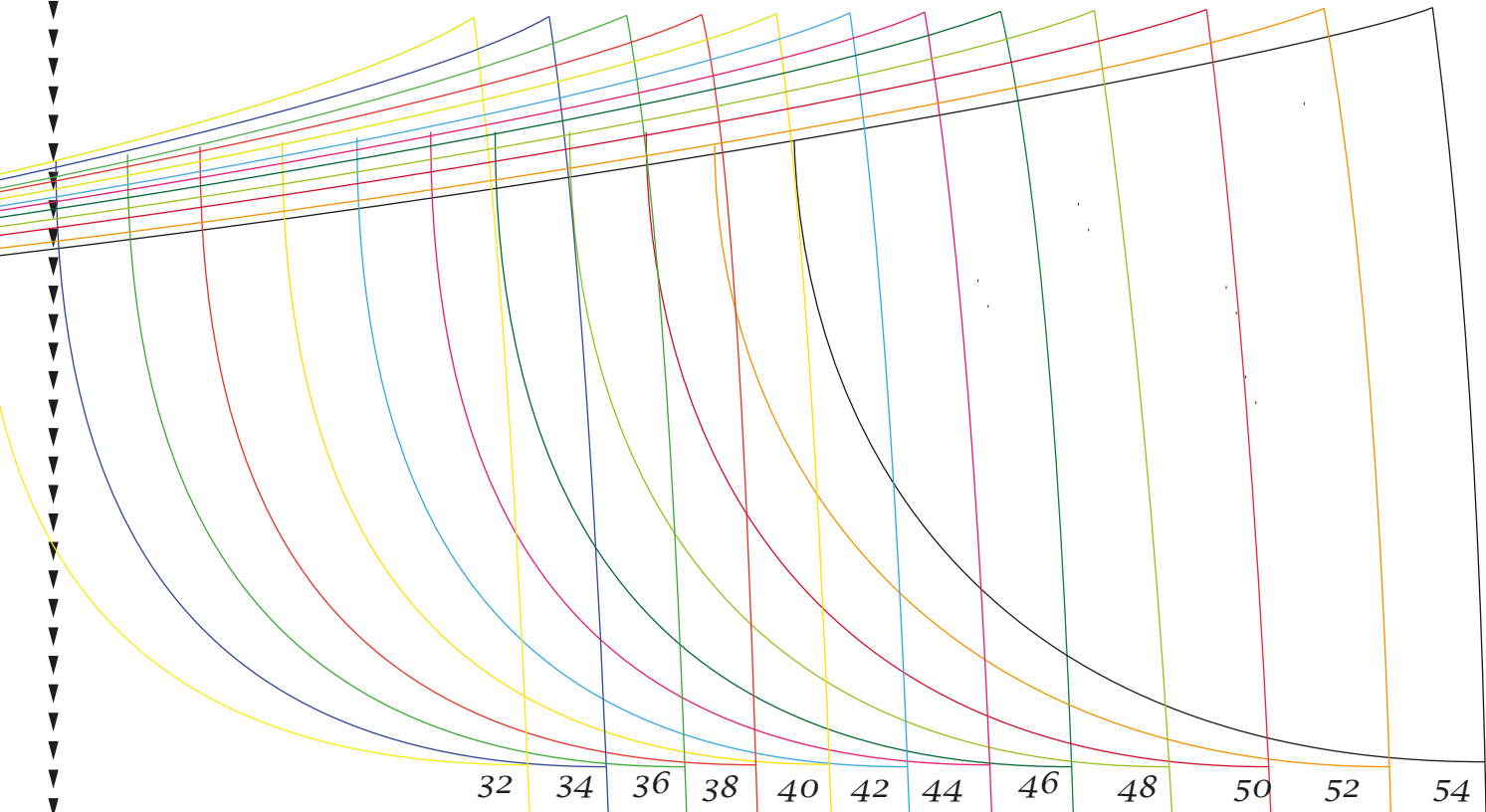
Kontrollkästchen
3 x 3 cm

A 1

Bund

Leijara





FADENLAUF



Vorderes Hosenbein

1 x in doppelter Stofflage
zuschneiden

*Bei dehnbaren Stoffen
keine Nahtzugaben nötig!*

Shorty

B 1



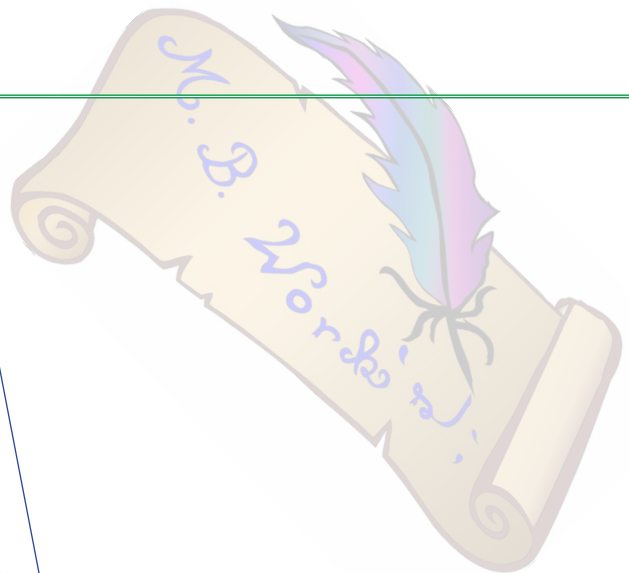
32 34 36 38 40 42 44 46 48 50 52 54

B 2



C1

52/54
48/50
44/46
40/42
36/38
32/34



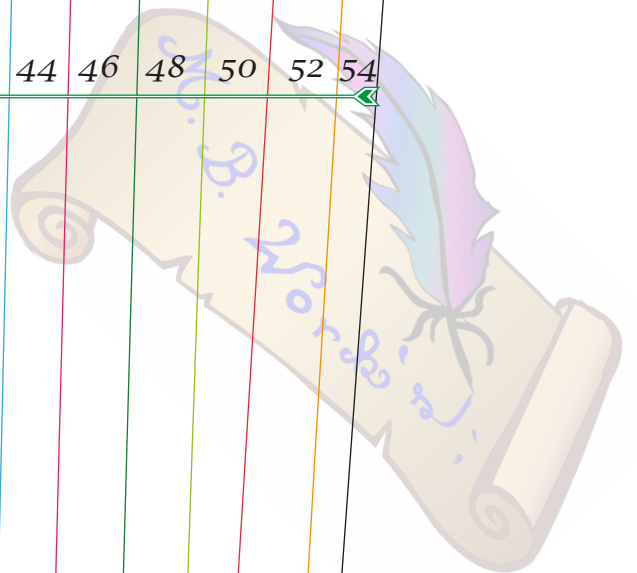
Kniehöhe

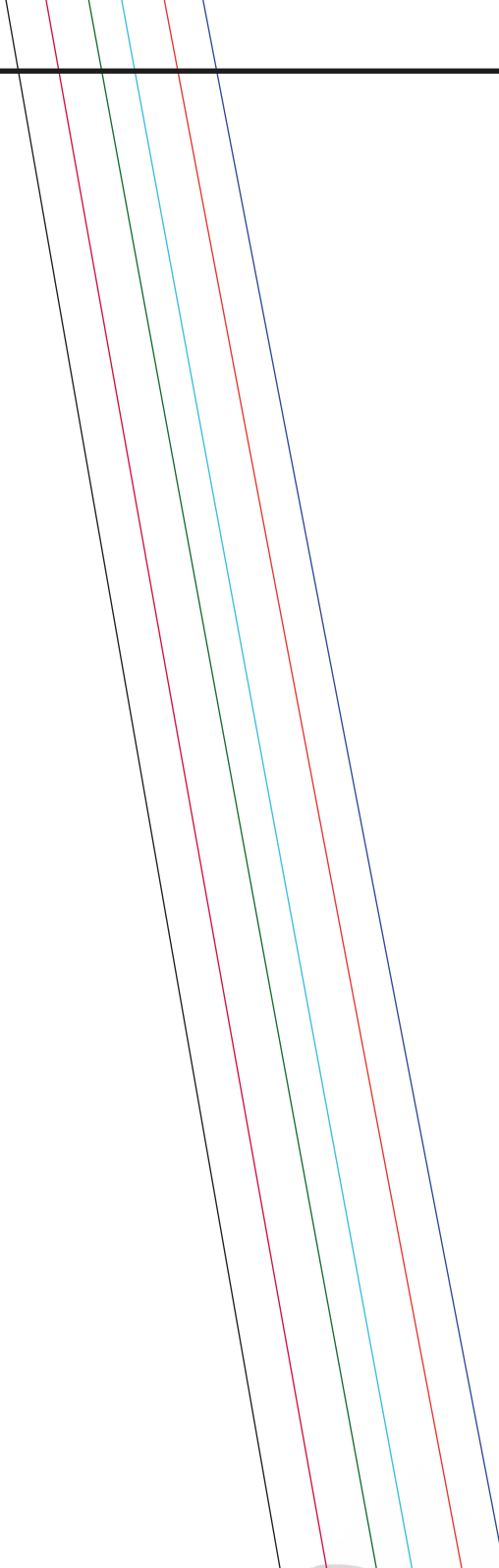
32 34 36 38 40 42 44 46 48 50 52 54

C 2

3/4 Länge

32 34 36 38 40 42 44 46 48 50 52 54





lange Hose

