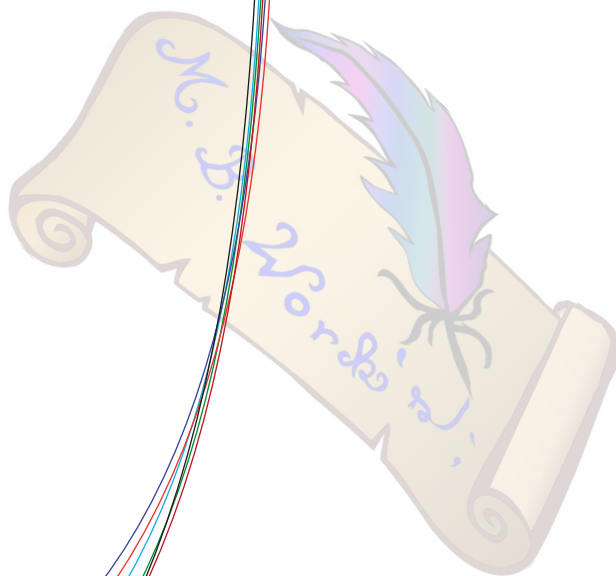


Kontrollkästchen
3 x 3 cm

A 1

Bund



Passe
wenn gewünscht
1 x in doppelter Stofflage
mit NZ zuschneiden!

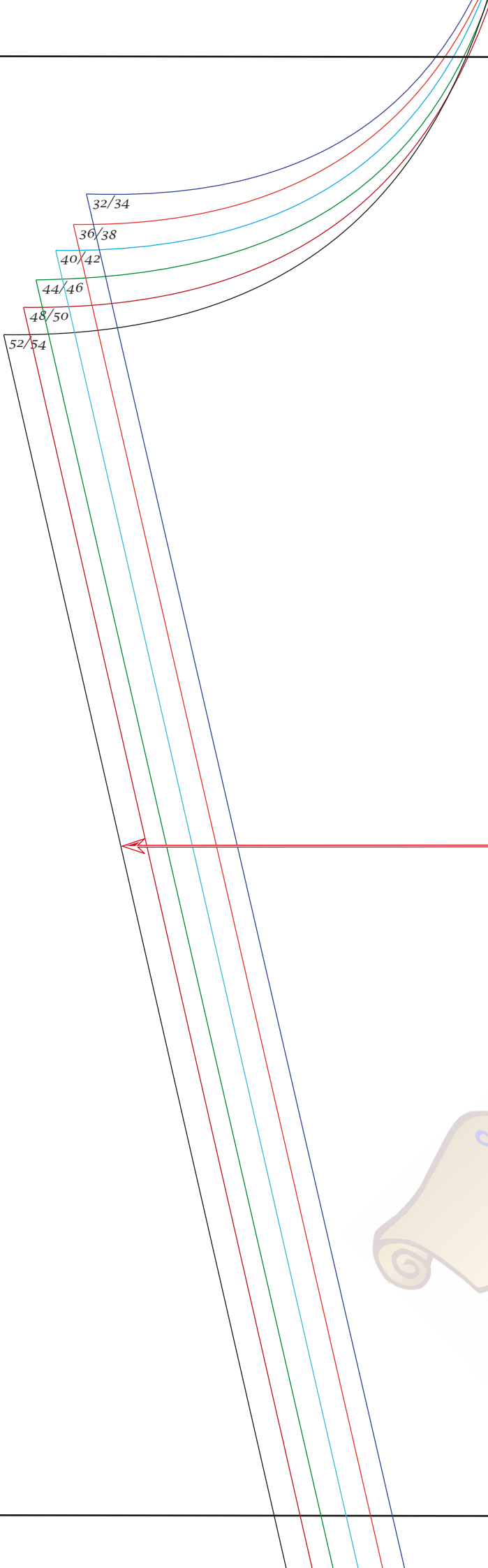
32 34 36 38 40

Bei Passe und Schnittkante zur Passe
unbedingt Nahtzugabe zugeben!

FADENLAUF

Leijara





B 1



Hinteres Hosenbein

1 x in doppelter Stofflage zuschneiden

*Bei dehnbaren Stoffen
keine Nahtzugaben nötig!*

B 2

Shorty

32 34 36 38 40



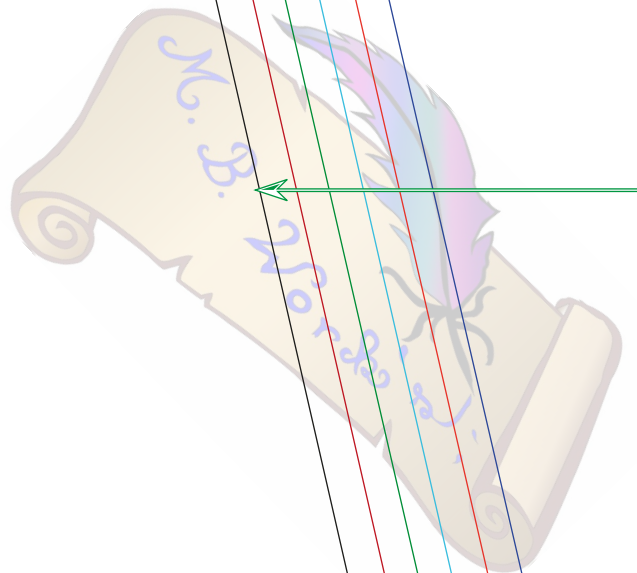
B 3

4 36 38 40 42 44 46 48 50 52 54



C 1

52/54
48/50
44/46
40/42
36/38
32/34



Kniehöhe

32

34

36

38

40

C 2

3/4 Länge

32

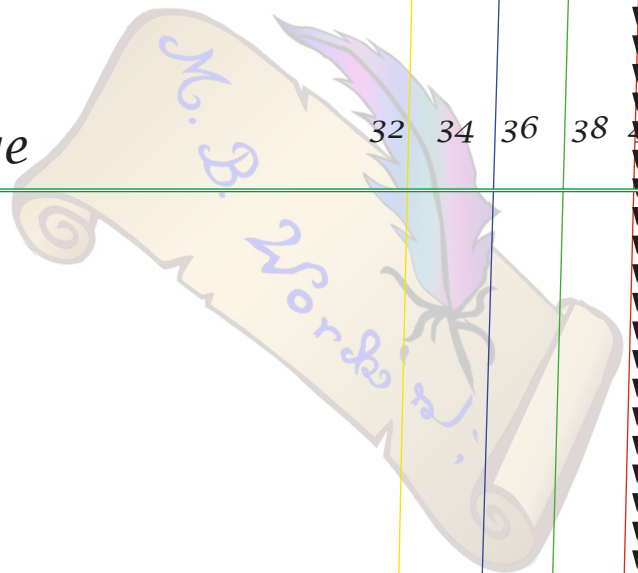
34

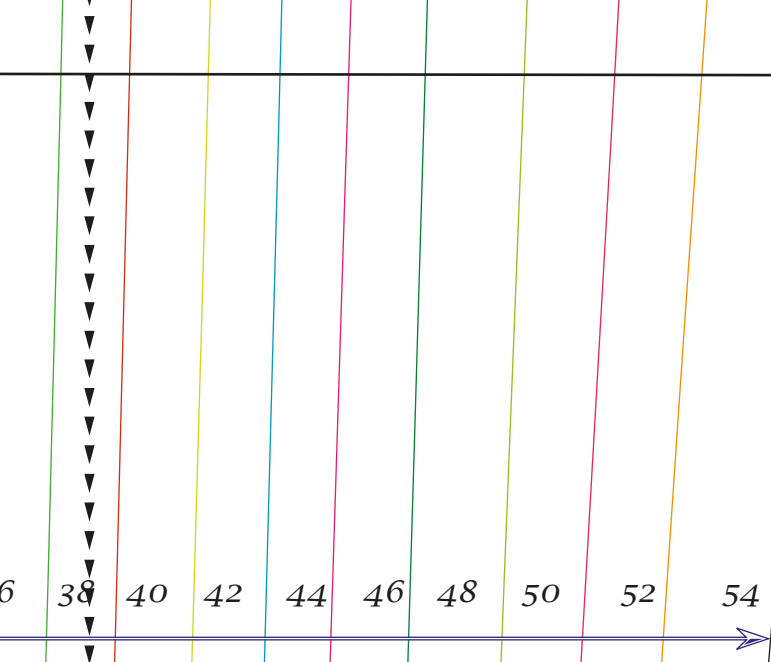
36

38

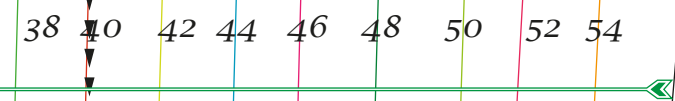
40

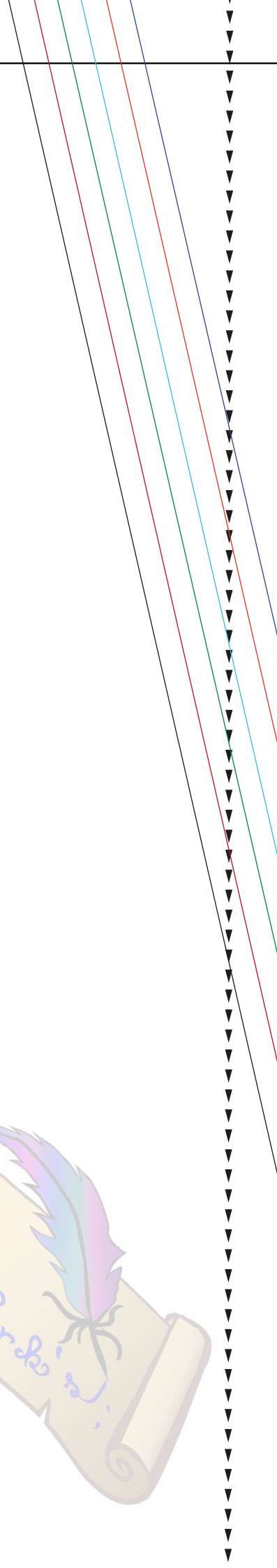
42





C3





Lange Hose



